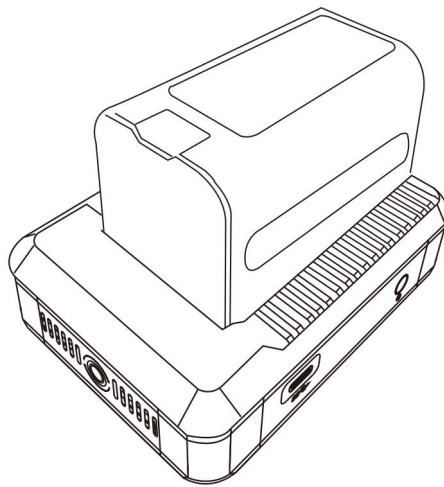


CT-B1 UVC to HDMI Converter

User Manual



1. Product Introduction

The CT-B1 UVC to HDMI Converter is a versatile, multi-functional device that integrates video capture, signal conversion, and power management. It efficiently captures UVC signals from compatible cameras, processes them internally, and outputs a high-quality 4K/30Hz HDMI signal, making it an ideal solution for live streaming, recording, and various video applications.

2. Key Features

High-Definition Conversion: Converts UVC video signals from USB cameras (like DJI Pocket 3, Action 4, Action 5) to a pristine 4K/30Hz HDMI output.

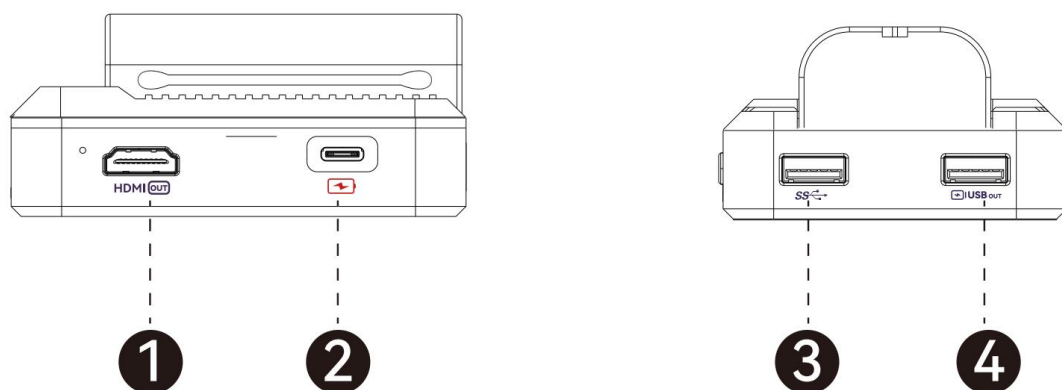
Simultaneous Device Charging: Provides pass-through charging for the connected DJI Pocket 3, ensuring extended operation without interrupting your session.

Multi-Purpose Power Bank: Features a USB-A output port to charge other peripheral devices (e.g., smartphones, microphones).

Dedicated Battery Charger: Can simultaneously charge DJI F550 or F970 batteries, serving as a portable power management hub.

3. Interface & Controls

Please refer to the diagrams below for the location of all interfaces and controls.

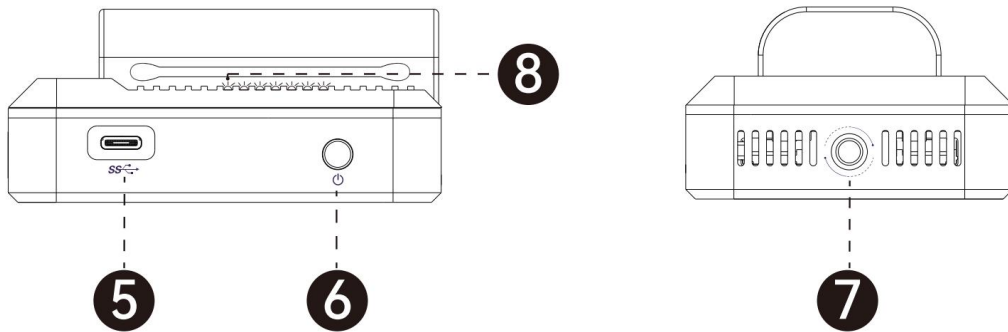


1)HDMI OUT: Outputs ultra-high-definition 4K/30Hz video signal.

2)DC IN (Charging Port): Power input port for charging the device and providing system power. (Input: 5V/2A, 9V/2A, or 12V/2A).

3)USB-A (Input): Connects to USB cameras or DJI Pocket 3 for UVC video signal input.

4)USB-A (Output): Functions as a 5V/2A power bank to charge other devices.

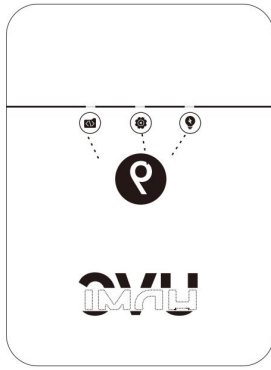


5)Type-C (Input): Connects to USB cameras or DJI Pocket 3 for UVC video signal input and charging.

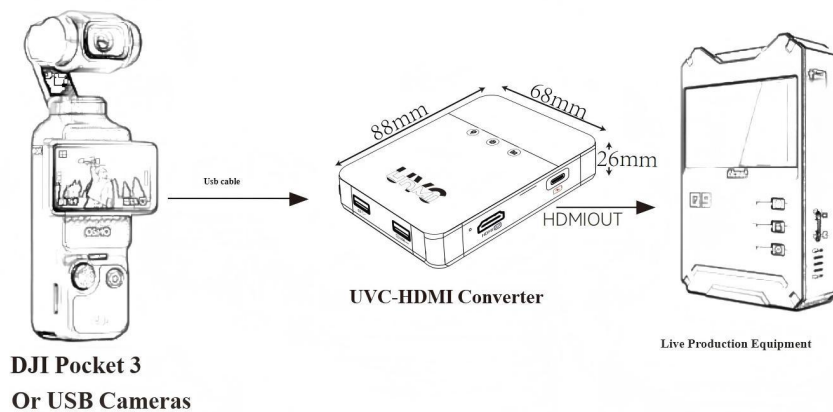
6)Power Button: Press and hold for 2 seconds to turn the device on or off.

7)Cold Shoe Mount: Standard mount for attaching accessories like microphones or lights.

8)Battery Level Indicator: Displays the current battery level and charging status.



9)Status Indicator: Shows system status for power, operation, and signal conversion.



4. Operation Guide

Charging the Device: Connect a compatible power adapter (see specifications) to the **DC IN** port to charge the internal battery.

Powering On: Press and hold the **Power Button** for 2 seconds. The Battery Level Indicator and Status Light will turn on.

Video Conversion: Connect your USB camera or DJI Pocket 3 to either the **USB-A (Input)** or **Type-C (Input)** port.

Connect an HDMI cable from the **HDMI OUT** port to your display, monitor, or capture card.

The device will automatically recognize the source and begin conversion. The Status Light will indicate a successful connection.

Charging Other Devices: Use a standard USB cable to connect your device to the **USB-A (Output)** port to utilize its power bank function.

5. Technical Specifications

Model	CT-B1
Input Interfaces	USB-A (UVC), Type-C (UVC)
Output Interfaces	HDMI OUT, USB-A (Power)
Power Input	DC IN (5V/2A, 9V/2A, 12V/2A)
Max. Output Power	20W
Video Resolution	3840 x 2160 @ 30Hz (4K/30Hz)
Video Standards	HDMI 2.0, USB 3.0
Decoding Format	MJPEG
Compatibility	UVC 1.1, UVC 1.5 protocols
Operating Temperature	0°C to 55°C
Operating Humidity	20% to 55% RH

Device Dimensions	90 x 68 x 26 mm
Product Weight	[Weight to be filled]
Package Dimensions	220 x 110 x 32 mm

6. Package Contents

CT-B1 UVC to HDMI Converter x 1

USB-Type-C Cable x 1

User Manual x 1

Warranty Card x 1